

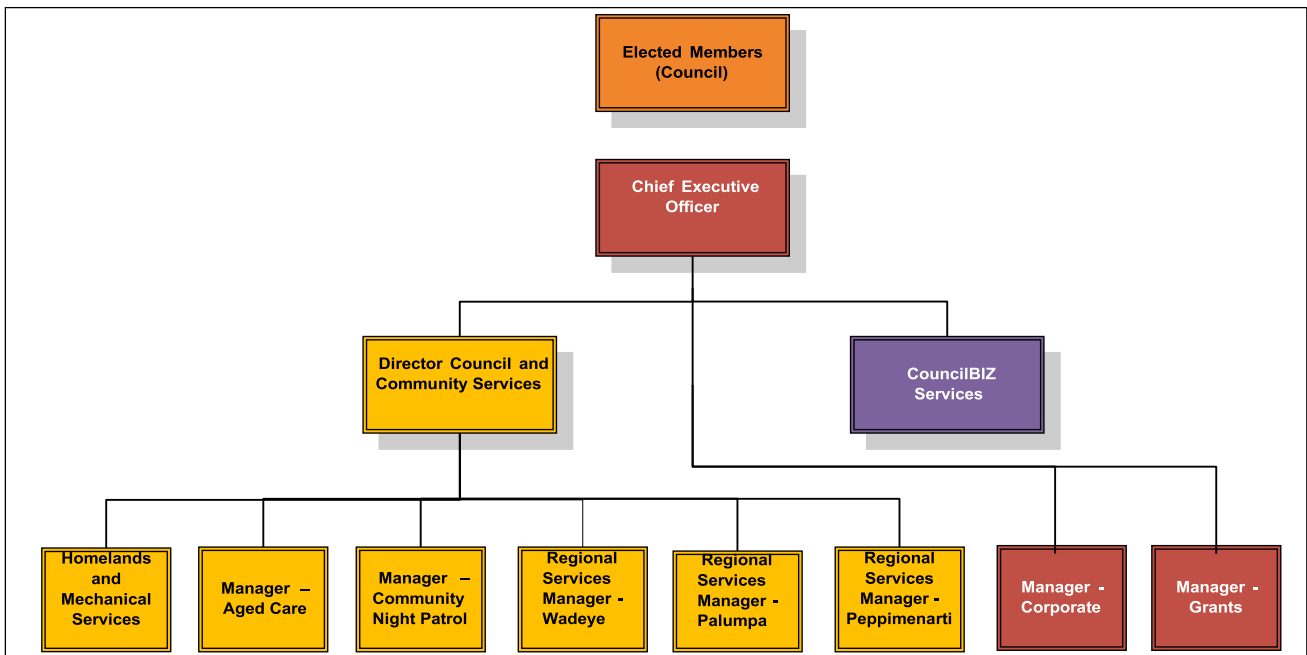
Policy Name	Organisational Chart
Policy Type	Human Resources
Policy Number	HR14
Version	3
Approval Date	January 2019
Renewal Date	January 2022



Policy Number **HR14**
Policy Name **Organisational Chart**

As per the *Local Government Act*, the Chief Executive Officer is responsible for the appointment of staff in accordance with a staffing plan/organisational chart which has been approved by Council.

WEST DALY REGIONAL COUNCIL ORGANISATION CHART 2017-18



SUMMARY

Council's elected members comprise the Mayor, Deputy Mayor and Councillors.

The Mayor is the principal member of Council whose role is to chair meetings of the Council and to speak on behalf of Council as Council's principal representative. The Mayor carries out civic and ceremonial functions and other official duties, and

Darwin Office

Unit 1/70 Cavenagh Street, Darwin NT 0800 | GPO Box 3775, Darwin NT 0801 | Ph: 08 7922 6403

Email info@westdaly.nt.gov.au | www.westdaly.nt.gov.au | ABN: 25 966 579 574

importantly oversees Councillor conduct and ensures Councillors act in a manner expected of a person holding that position.

The Deputy Mayor carries out any of the principal member's functions when the Mayor delegates the functions to the Deputy Member, is absent because of illness or some other pressing reason or is on leave.

The role of a Councillor is to represent the interests of all community members within the Council area. They participate in the deliberations of Council and provide leadership and guidance to Council. Their role is to facilitate communication with residents and must act in the best interests of residents. They are elected for a fixed-term and may serve on Council committees.

The Chief Executive Officer is responsible to the Council to undertake the day-to-day management of staff, provide information and advice to Council, ensure Council's policies, plans and decisions are implemented, ensure Council's constituency is kept properly informed, ensure Council's assets and resources are properly managed and maintain proper standards of financial management.

TERMINOLOGY AND REFERENCES

REFERENCES

Local Government Act

FURTHER INFORMATION:

Chief Executive Officer